

Vegetative biomass data for the introgressed lines

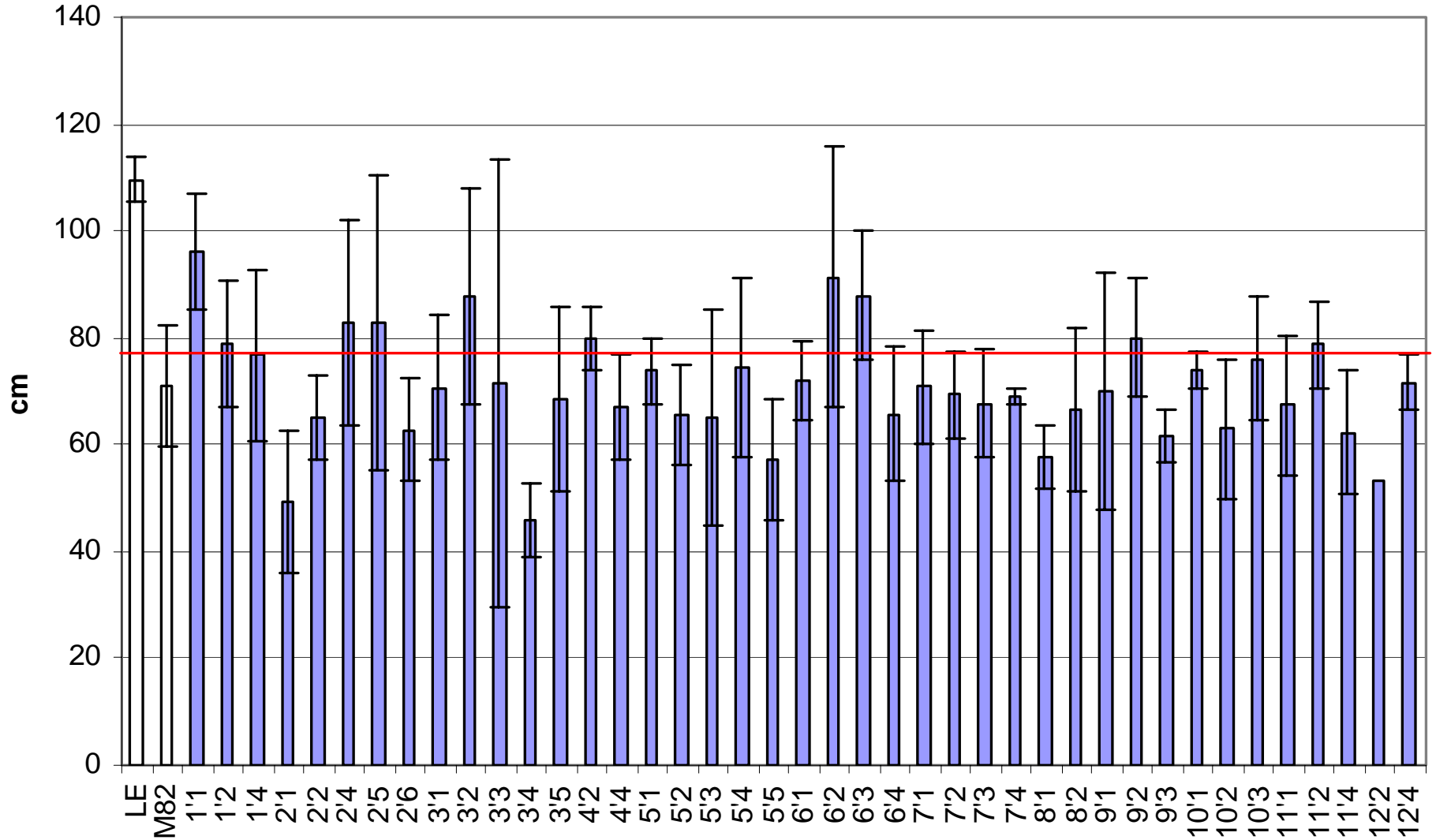
- **Tomato Introgression lines**
- *L. esculentum* with chromosomal introgressions from *L. pennellii*
- 50 IIs plus 2 parent lines
- Seed sown 24/4/03

List of Lines used

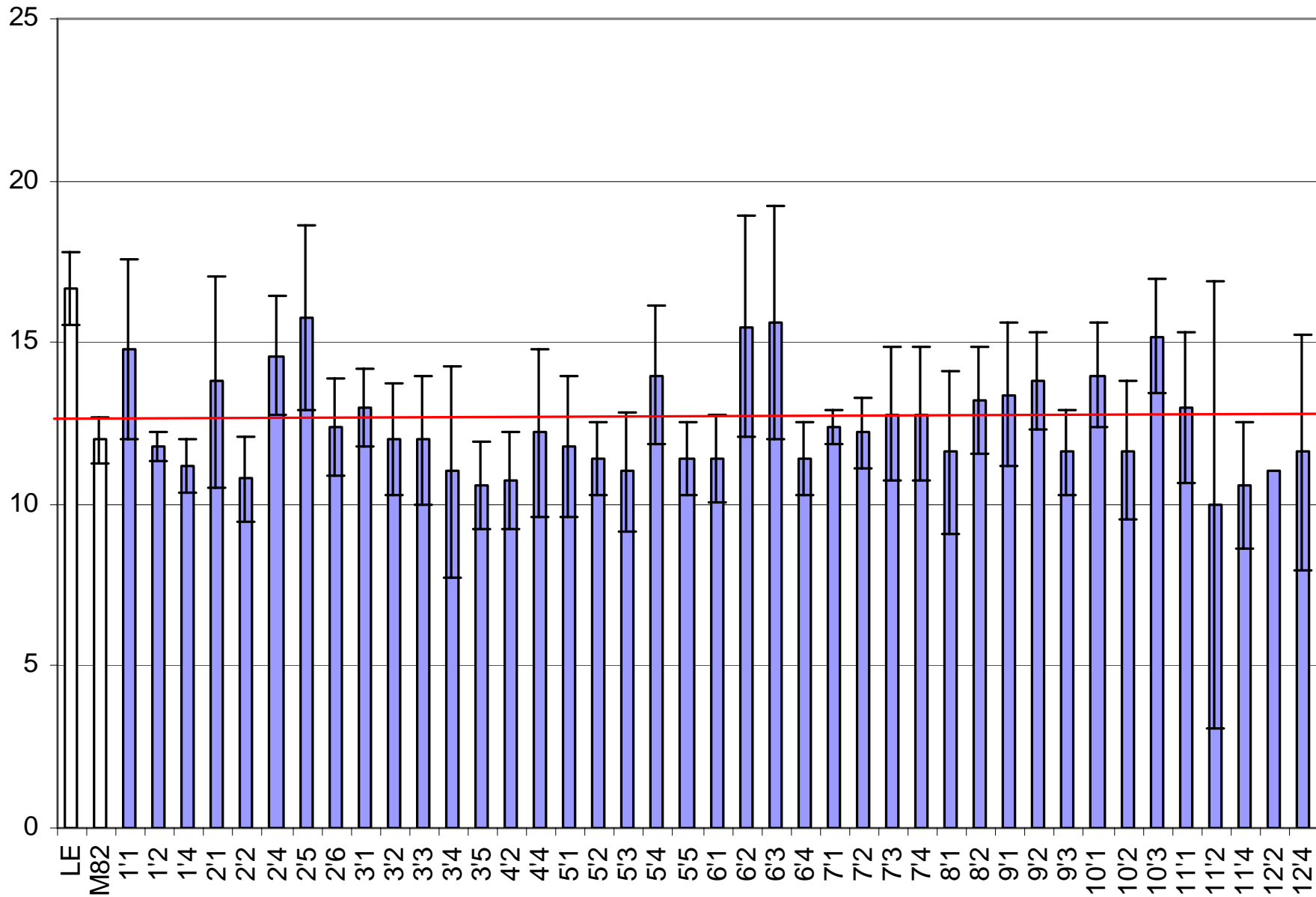
Expand table to view the data

L.A.1000	L.	Number of plates
0716		
3423	802	10
3476	1-1	10
3478	1-2	2
3482	2-2	2
3483	2-4	10
3488	2-2	2
3489	3-4	10
3492	4-2	2
3484	4-4	10
3501	6-2	10
3505	7-2	10
3518	11-1	10
4021	1-2	10
4023	1-4	10
4026	2-1	10
4027	2-2	10
4040	2-5	10
4041	2-6	10
4043	2-1	10
4044	2-2	2
4047	2-5	2
4048	4-1	2
4051	4-2	10
4054	5-1	10
4055	5-2	10
4056	5-3	10
4057	5-4	10
4058	5-5	10
4059	6-1	10
4062	6-2	2
4063	6-4	10
4064	7-1	10
4066	7-2	10
4067	7-4	10
4069	7-5	2
4071	8-1	10
4074	8-2	10
4076	8-2	4
4078	8-1	10
4081	9-2	10
4084	9-3	10
4087	10-1	10
4088	10-2	10
4091	10-2	10
4093	11-2	2
4094	11-2	2
4095	11-4	10
4097	12-1	2
4099	12-2	6
4100	12-2	2
4102	12-4	10

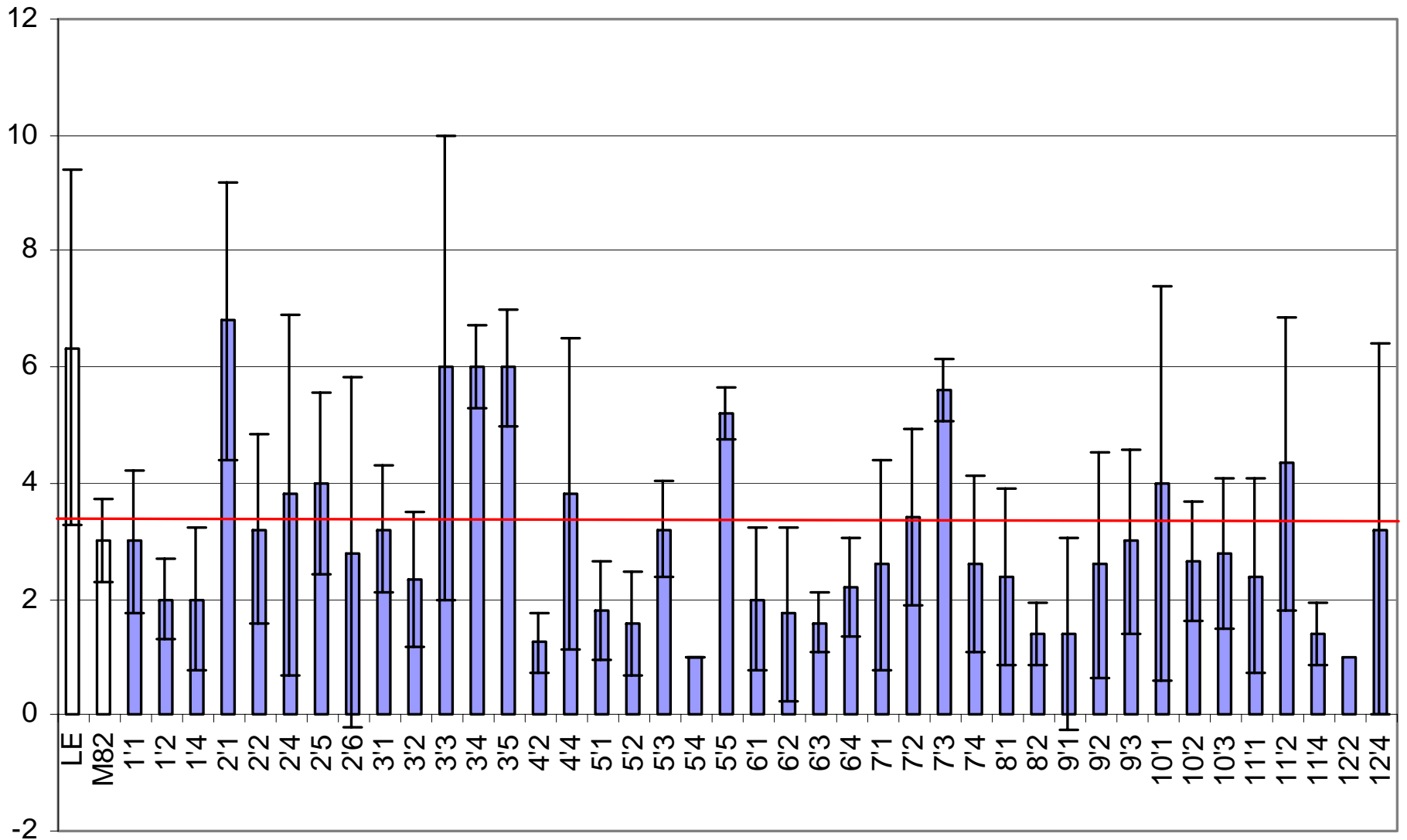
mean height of primary stem



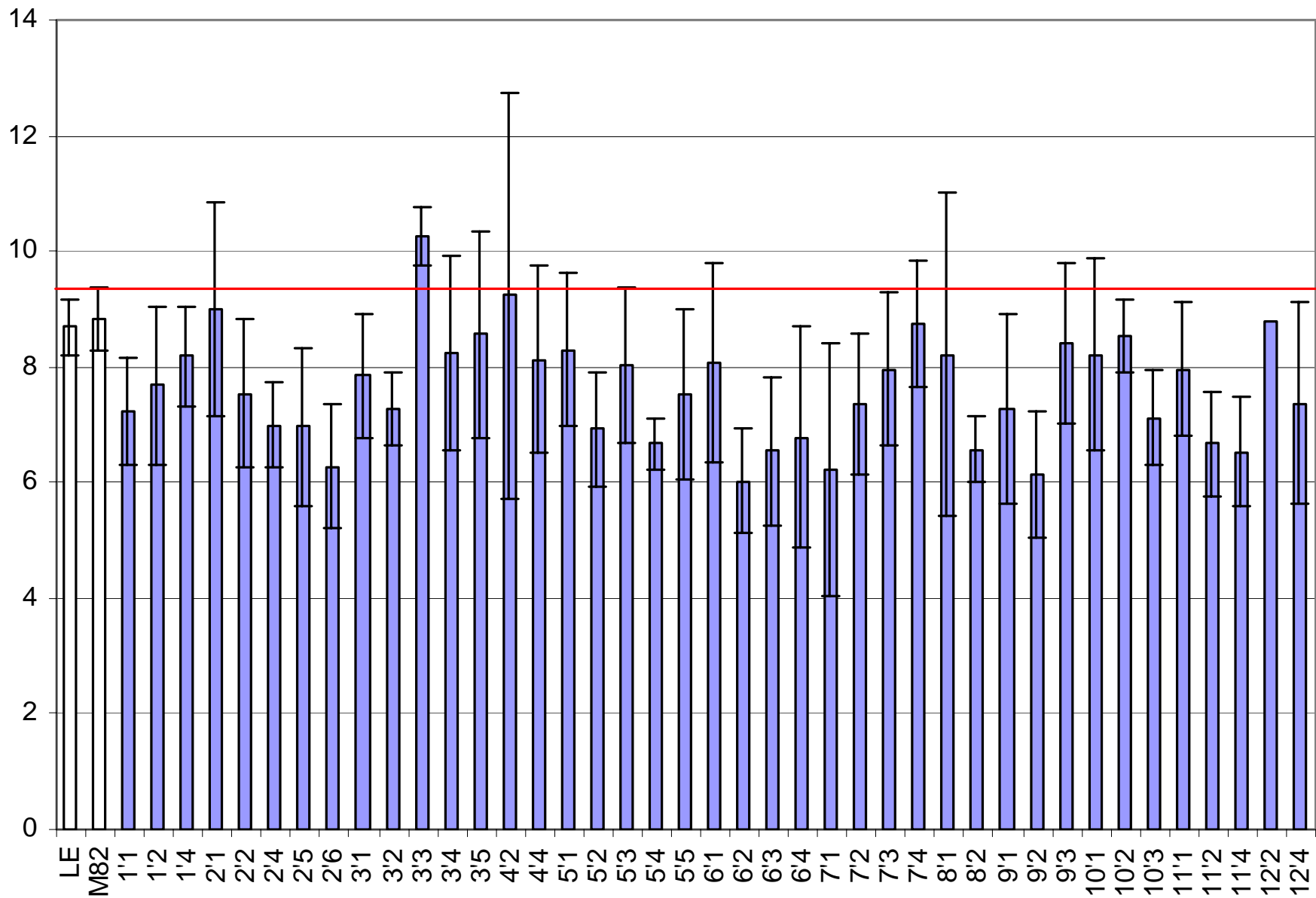
mean number of internodes



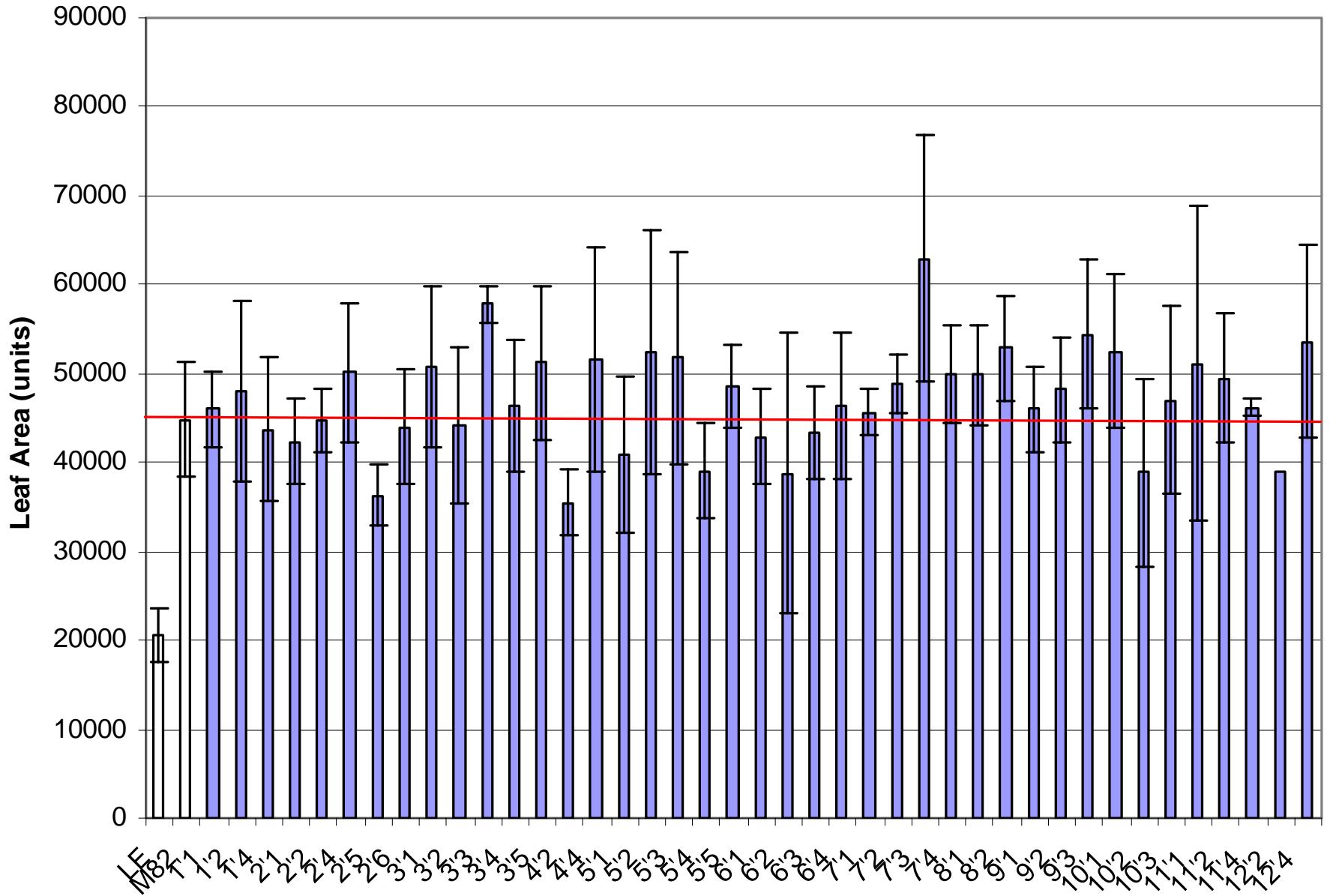
mean number of secondary stems



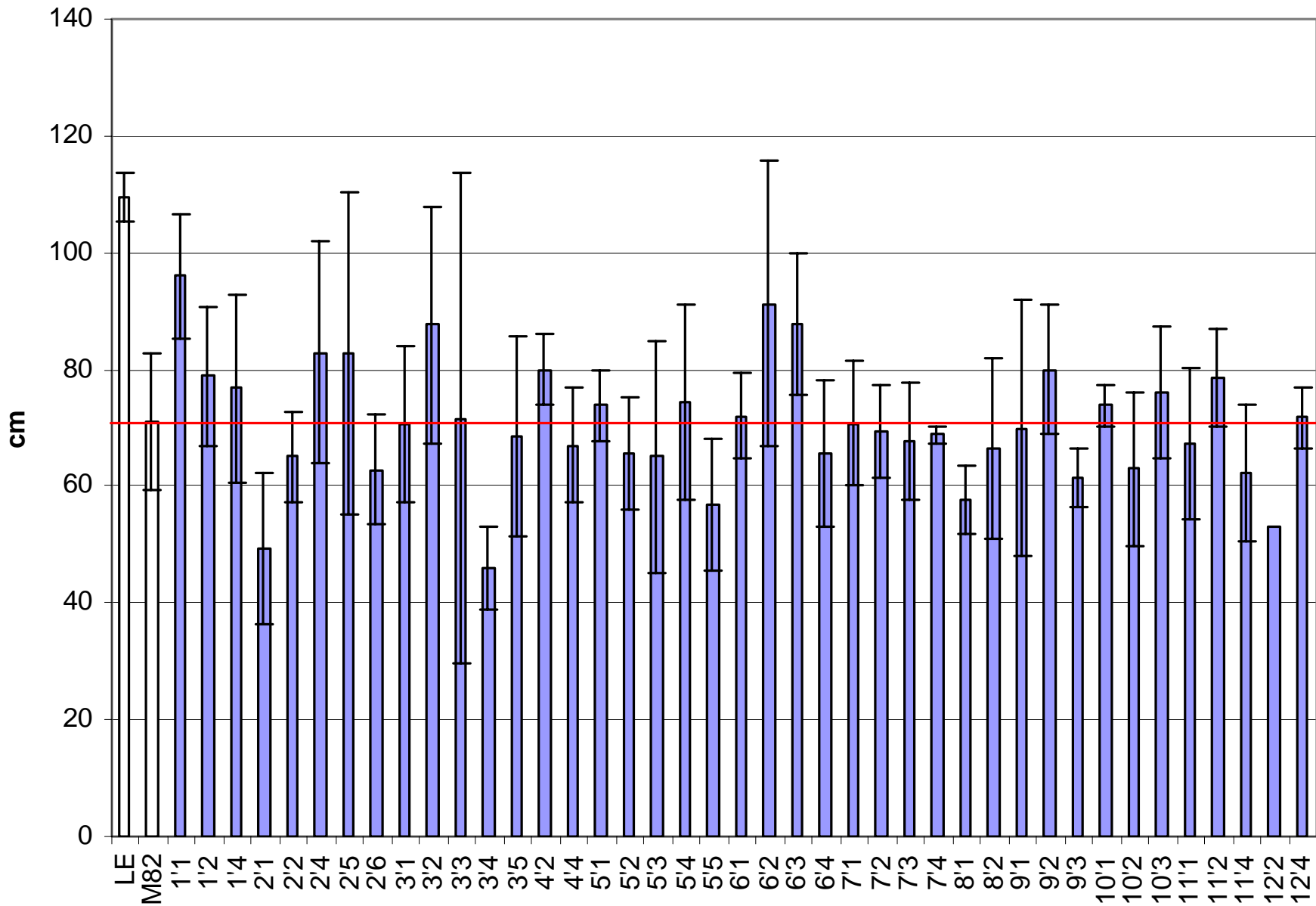
mean Leaf FW:DW



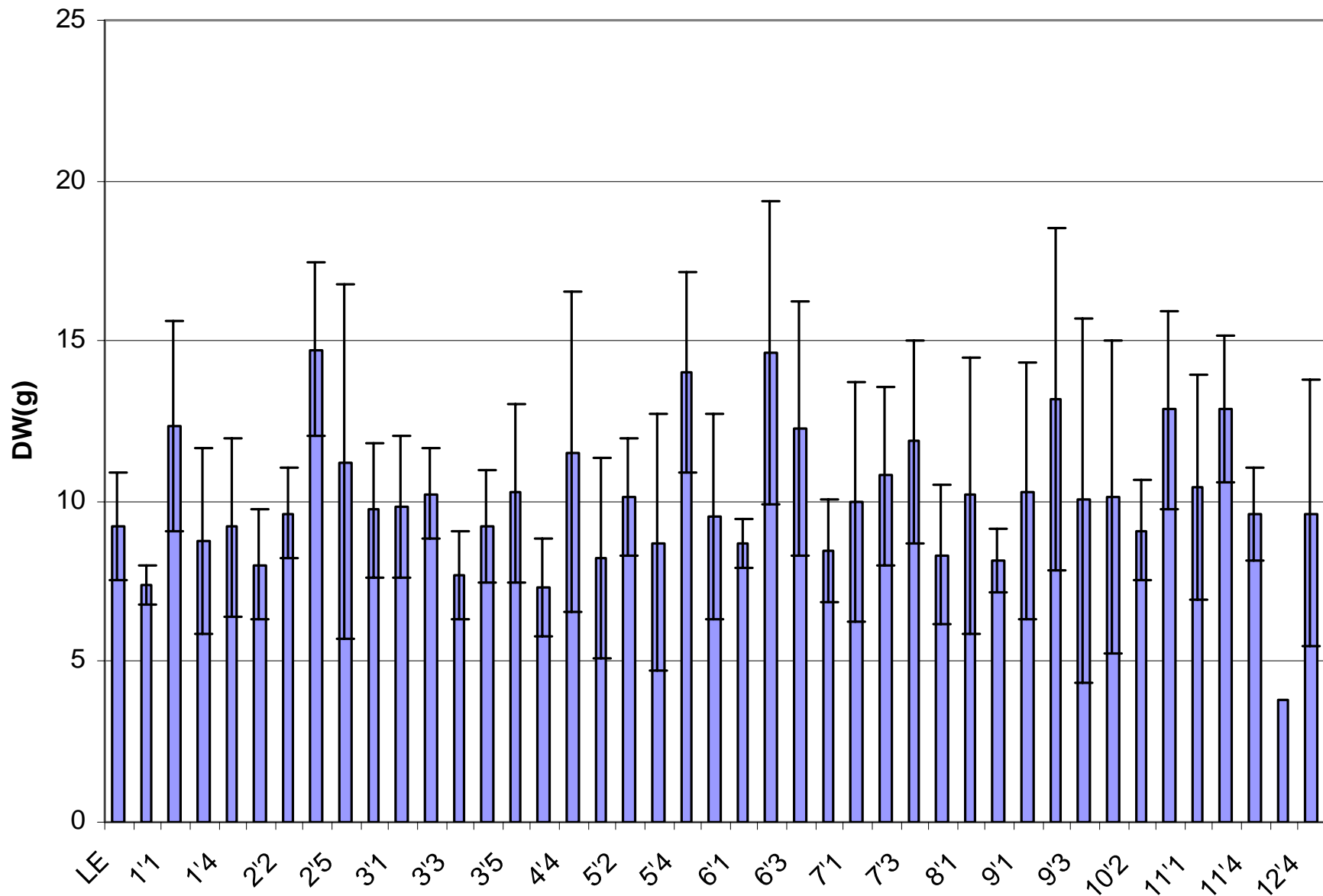
Mean Leaf Area



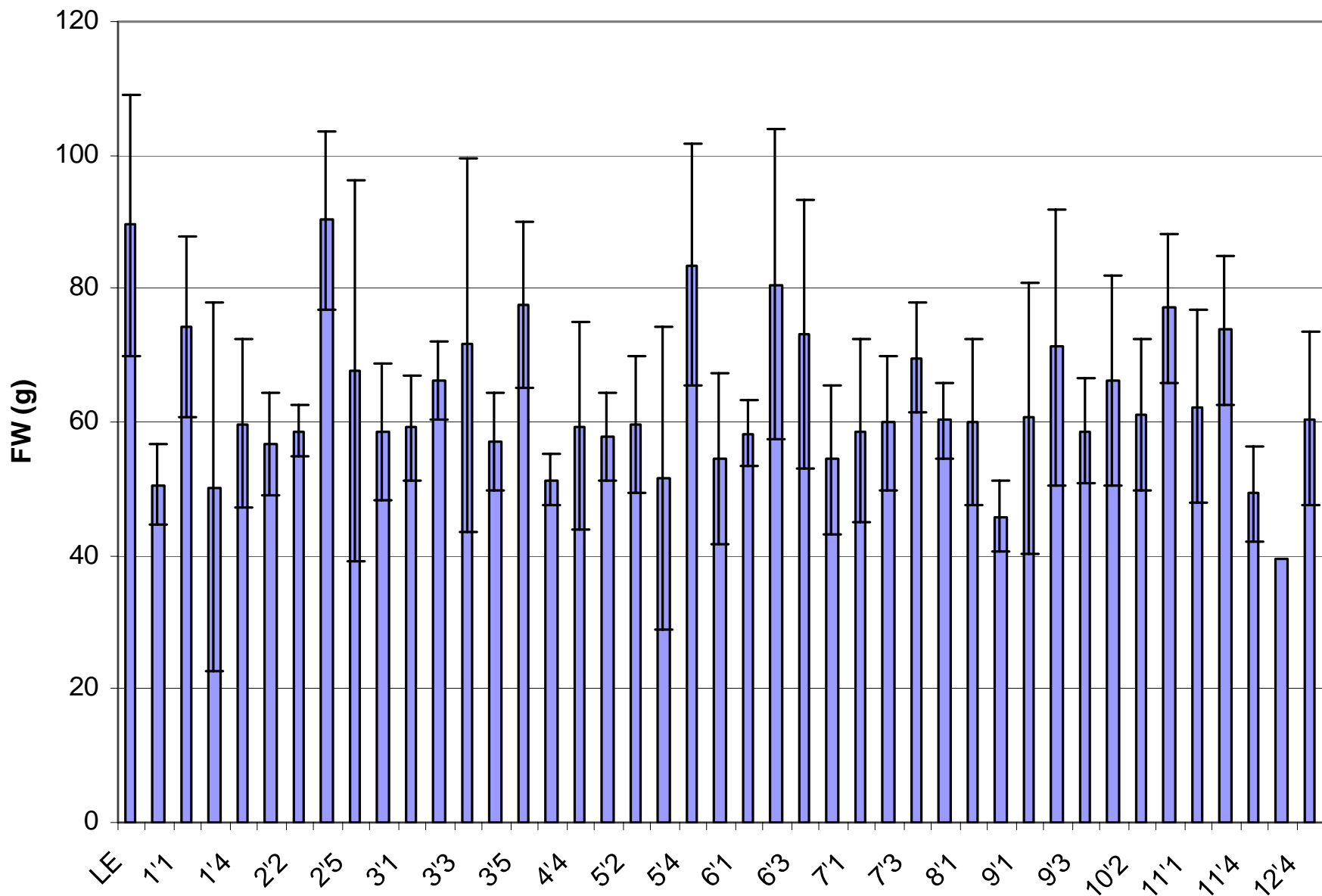
mean height of primary stem



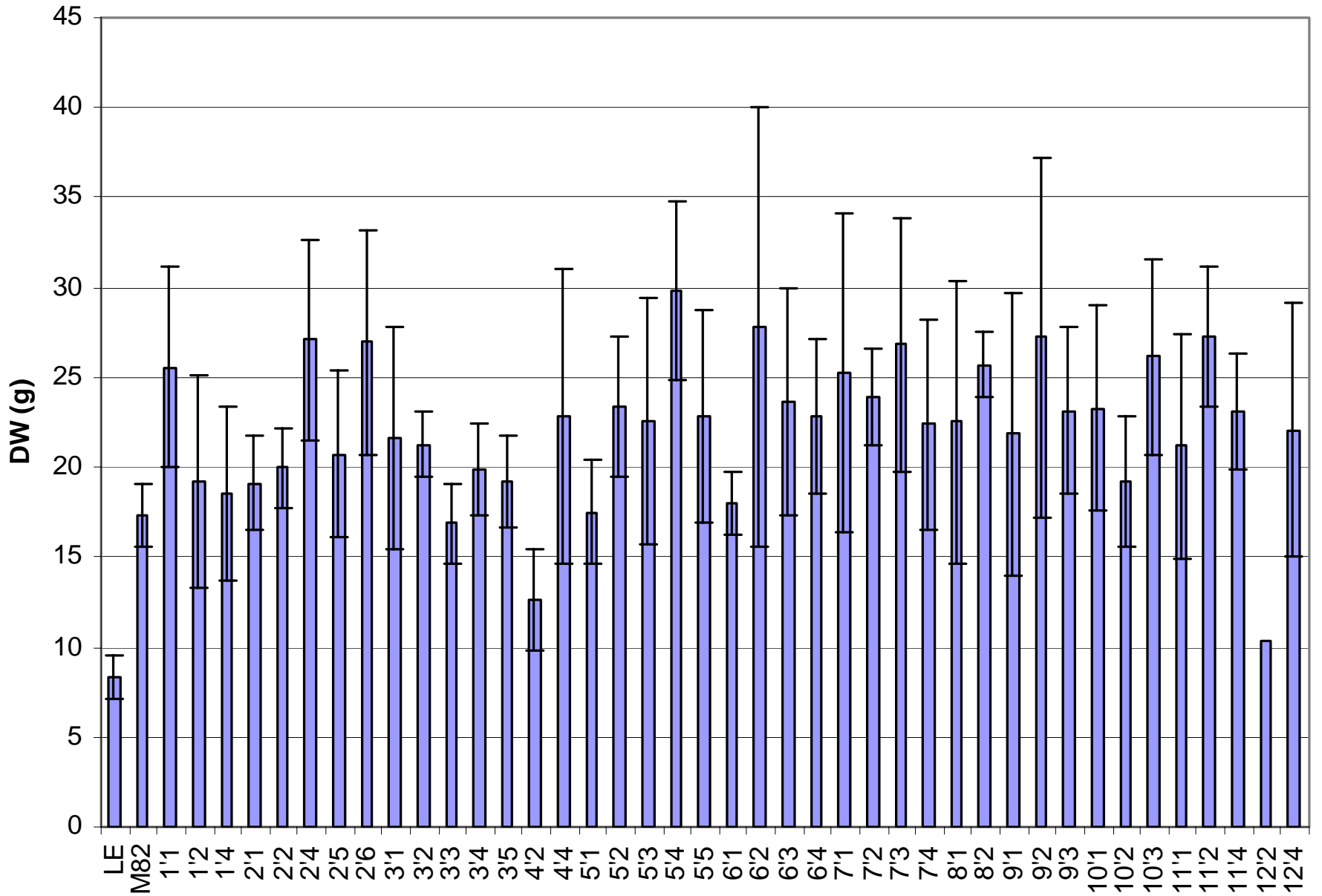
stem DW



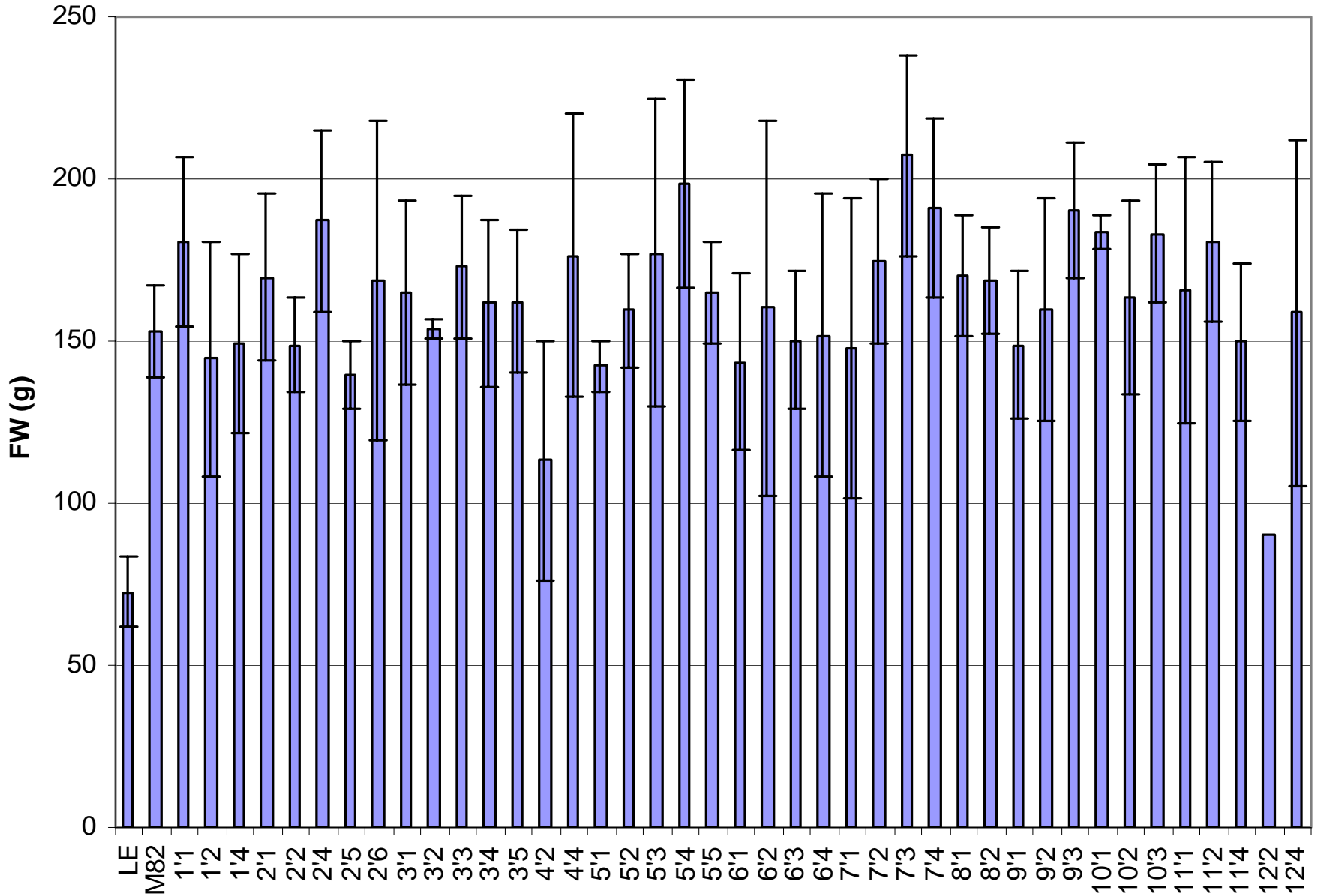
mean stem FW



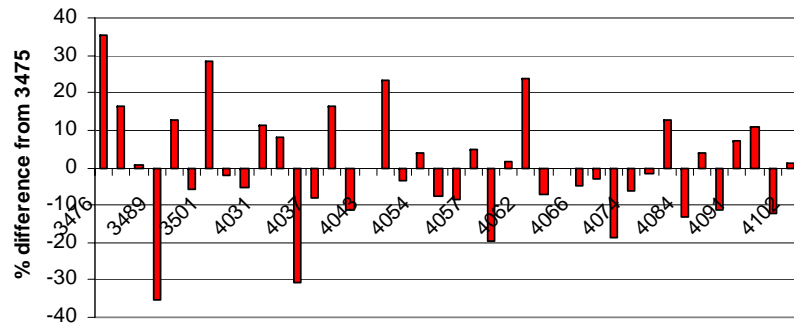
mean leaf DW



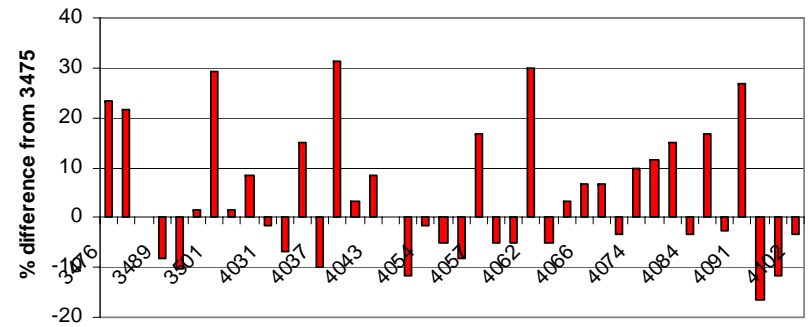
mean leaf FW



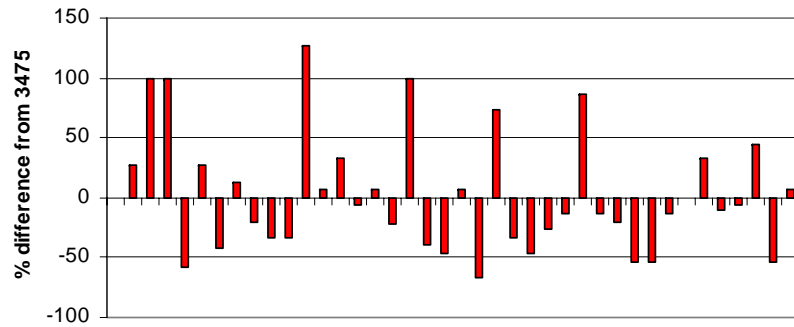
Plant height



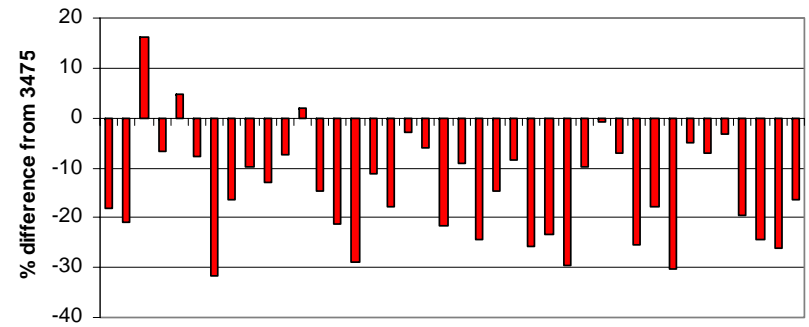
number of internodes



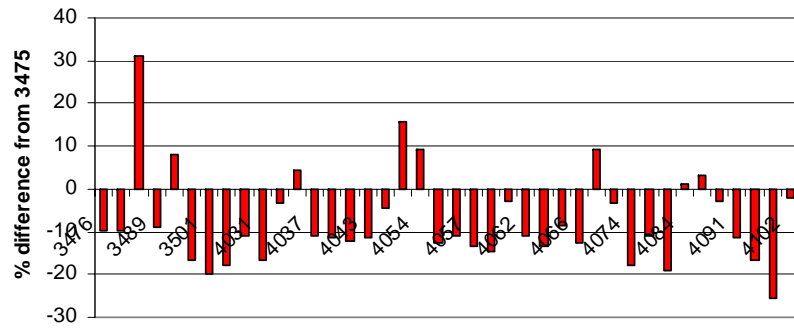
number of secondary stems



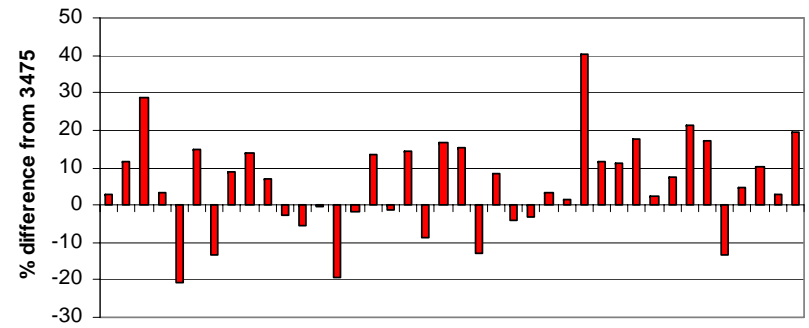
leaf FW:DW



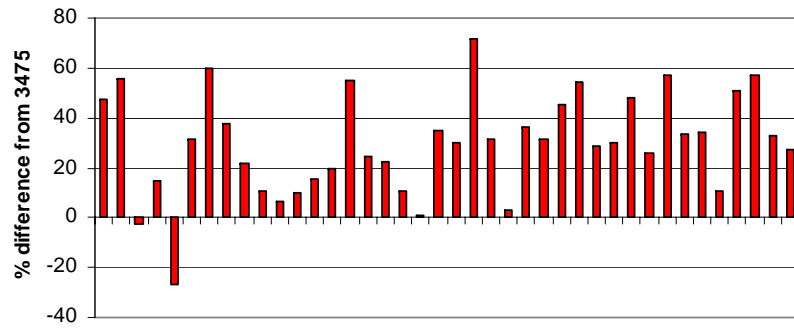
stem FW:DW



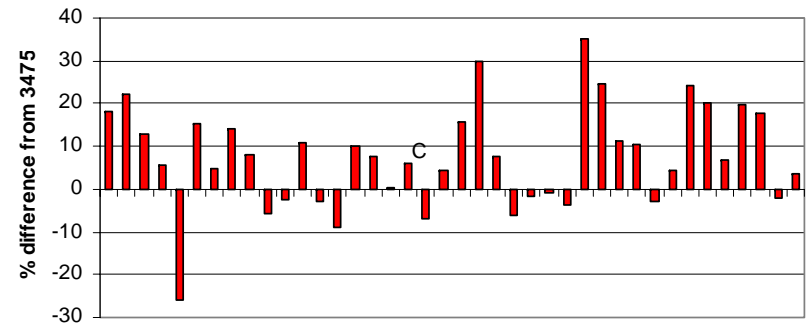
leaf area



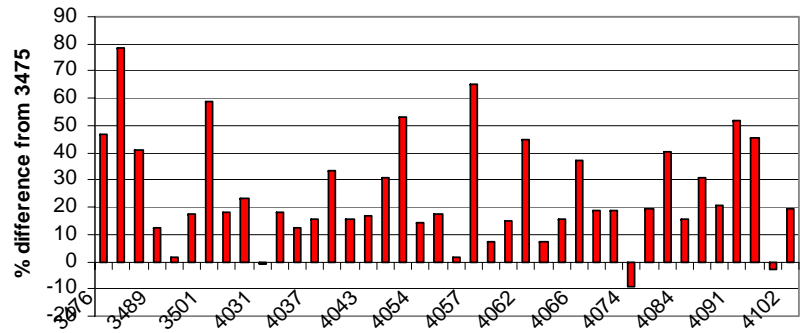
leaf DW



leaf FW



stem FW



stem DW

