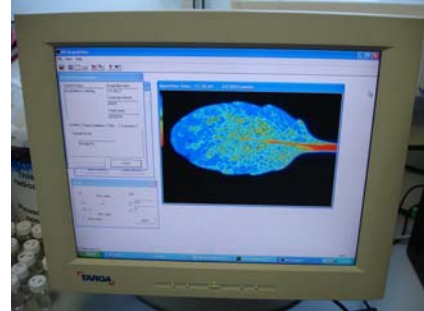
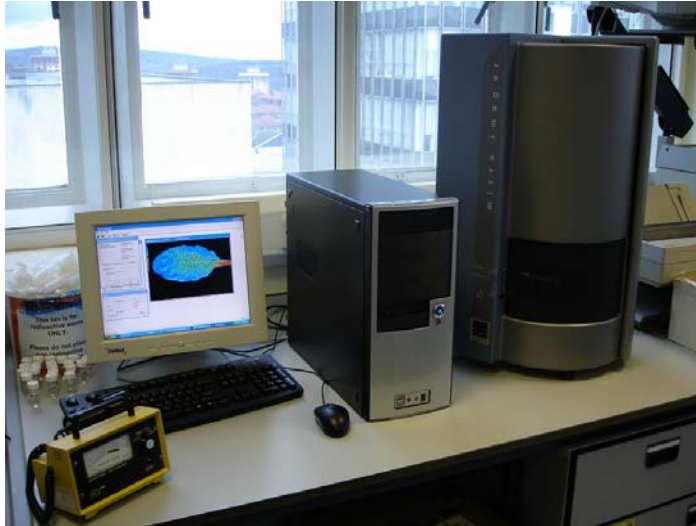


Analytical facilities within the department of Animal and Plant Sciences
(The University of Sheffield)

Biospace Micro-Imager system

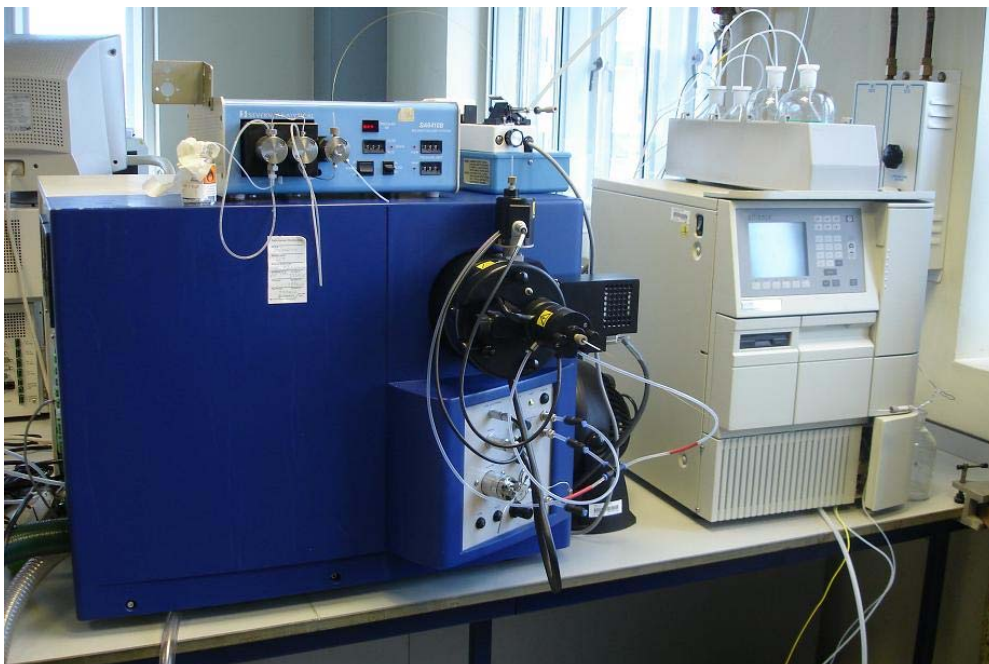
A high resolution autoradiography imaging system capable of detecting both tritium (^3H) and carbon-14 (^{14}C) isotopes in real-time. Dual isotope separation allows detection of different substrates within the same sample.



<http://www.lablogic.co.uk/display.asp?name=MicroImager>

LCT ESI-TOF-MS

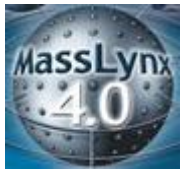
Our Electro-Spray Injection Time-Of-Flight Mass Spectrometer allows the fingerprinting and identification of metabolites within complex mixtures. Samples can either be injected 'directly' or via HPLC.



Bioinformatics

High specification workstations all installed with the latest commercial and in-house data analysis software packages.

Available software includes:



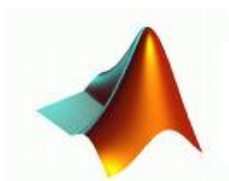
MassLynx V4.0



SIMCA-P 11



MINITAB 14



MATLAB 7.1

[BigRedBin](#) – Mass list reduction and binning tool

